

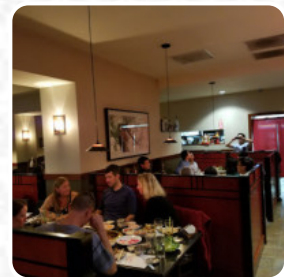
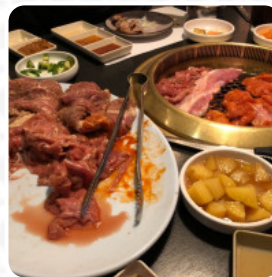
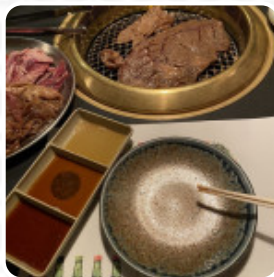


Toji Korean Grill House Menu

<https://menuweb.menu>

4615 SE Hawthorne Blvd, 97215, Portland, US, United States

+15032328998 - <http://www.tojikoreangrillhouse.com/>



Here you will find the [menu](#) of **Toji Korean Grill House** in Portland. At the moment, there are **28** dishes and drinks on the menu. Toji has earned its reputation as a go-to destination for Korean BBQ, delighting patrons with the quality of its meat and authentic dishes. Many guests commend the food as delicious, particularly the bulgogi and various banchan, which evoke memories of dining in Korea. However, inconsistencies in service and some menu items—like the unlimited BBQ—have raised concerns. Long wait times for seating and a lack of attentive service detract from the overall experience. Despite these flaws, the enthusiastic ambiance, skilled management, and a strong commitment to delivering genuine flavors keep diners returning for more.

Pinecreek And Farmstall Menu



Entrées

BUFFALO WINGS

Seafood

CALAMARI

Breakfast

PORRIDGE

Side Dishes

RICE

Starters & Salads

FRENCH FRIES

Coffee

CAPPUCCINO

Mexican-American Food

EMPANADAS

Restaurant Category

DESSERT

Drinks

DRINKS

BEER

Hot Drinks

COFFEE

TEA

Ingredients Used

CARROTS

CHOCOLATE

SEAFOOD

PORK MEAT

BEEF

BACON

These Types Of Dishes Are Being Served

ROAST BEEF

CHICKEN

SALAD

TOSTADAS

BURGER

MEAT

PIZZA

SOUP

PANINI

SANDWICH

Pinecreek And Farmstall Menu



Pinecreek And Farmstall

Road A1, Holm Hill, Main Road,
Beaconbay,, 5201 Beacon Bay,
South Africa

Opening Hours:

Monday 09:00-17:00
Tuesday 09:00-17:00
Wednesday 09:00-17:00
Thursday 09:00-17:00
Friday 09:00-17:00
Saturday 08:00-18:00
Sunday 08:00-16:00

Made with [Menu](#)

